

CITY COUNCIL

For City Clerk's Use:

☐ **APPROVED** ☐ **DENIED**

Reso No. _____ File No. _____

Ord No. _____

Agenda Item No.: 13

Date: July 13, 2011

TO: Honorable Mayor and Members of the City Council

FROM: Edward N. Domingue, Director of Engineering Services
Ali M. Shahzad, Associate Engineer

SUBJECT: Implement Two-hour and Three-Hour Parking Time Zones at Various Locations
Citywide

RECOMMENDATION:

It is requested that Council adopt Resolution No. 2011-46, to implement two-hour and three-hour parking time zones at various locations citywide, listed below, with minor field adjustments per field conditions.

1. Lincoln / Ash
2. Jesmond Dene / Broadway
3. Park / E of Broadway
3. Las Villas / El Norte
5. Lincoln / E of Rose (3-hour time zone)
6. Broadway / Lincoln Avenue
7. 400 W. 9th Avenue
8. 2100 E. Valley
9. 600 N. Broadway in front of Food for Less
10. 2200 S. Escondido
11. Mission from Juniper east to Fig
12. Beechwood / Washington
13. Rose Street between Grand Avenue and Valley Parkway
14. Valley Parkway and Claudan Road
15. Broadway south of Crest Street (west-side)

FISCAL ANALYSIS:

Funds are available in the CIP Streets Annual Maintenance budget for the \$12,000 estimated sign installation expenses.

PREVIOUS ACTION:

On March 17, 2011, the Transportation and Community Safety Commission (TCSC) recommended approval to implement two-hour and three-hour parking time zones at various locations citywide.

BACKGROUND:

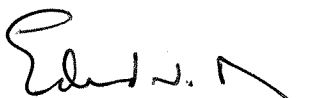
Escondido Municipal Code section 28-143 authorizes the City Traffic Engineer, with the approval of the City Council, to install signs and markings where necessary to restrict parking for a certain period of time. City officials regularly have received complaints of parking spaces being occupied for long periods by vehicles with "for sale" signs on them. The cars often appear to be parked for the sole purpose of selling the vehicle, but that purpose is difficult to verify without dedicating significant law enforcement resources. Likewise, efforts to limit the types of signs displayed on vehicles face several constitutional challenges.

As a general rule, cars may be parked on a public street for 72 hours at a time. But long term parking of vehicles by a relatively few sellers hampers the regular turnover of parking spaces that is needed to support local businesses and residences. Although the recommended parking restrictions may force the sellers to move to other streets, at some point the lack of adequate exposure or cost of frequently moving the vehicles should hinder those businesses that seek to use the public parking spaces for their personal gain.

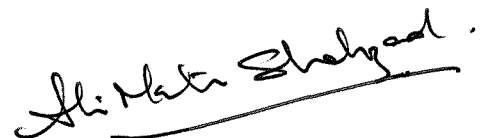
The Escondido Police Department Traffic Bureau identified those areas most commonly used for long term parking of vehicles with for sale signs. The City Traffic Engineer evaluated each area and found it appropriate to restrict parking in those areas identified above. On March 17, 2011, the TCSC recommended approval to implement two-hour and three-hour parking time zones at various locations citywide. During discussion at the TCSC, the elementary school district representative requested area 5 off Lincoln be designated for three-hour restricted parking due to multiple school events scheduled that regularly exceed two hours in duration. This is the only three-hour area so designated in this request.

As a part of the final evaluation of this request, the City Traffic Engineer sent out a mass mailing of approximately 180 notices to the property owners/tenants in close proximity to the respective areas evaluated. Only two return calls were received from this mailing- one requesting the limited time parking area be expanded and the other opposing the parking restriction because they did not feel this would solve the problem. Both of these comments were considered in the final delineation of the limited timed parking areas. The proposed parking restrictions are necessary to ensure equal access to public parking spaces and will have a positive impact on those businesses/residences adjacent to the timed parking zones. The limited time parking will take effect as soon as the signs are posted.

Respectfully submitted,



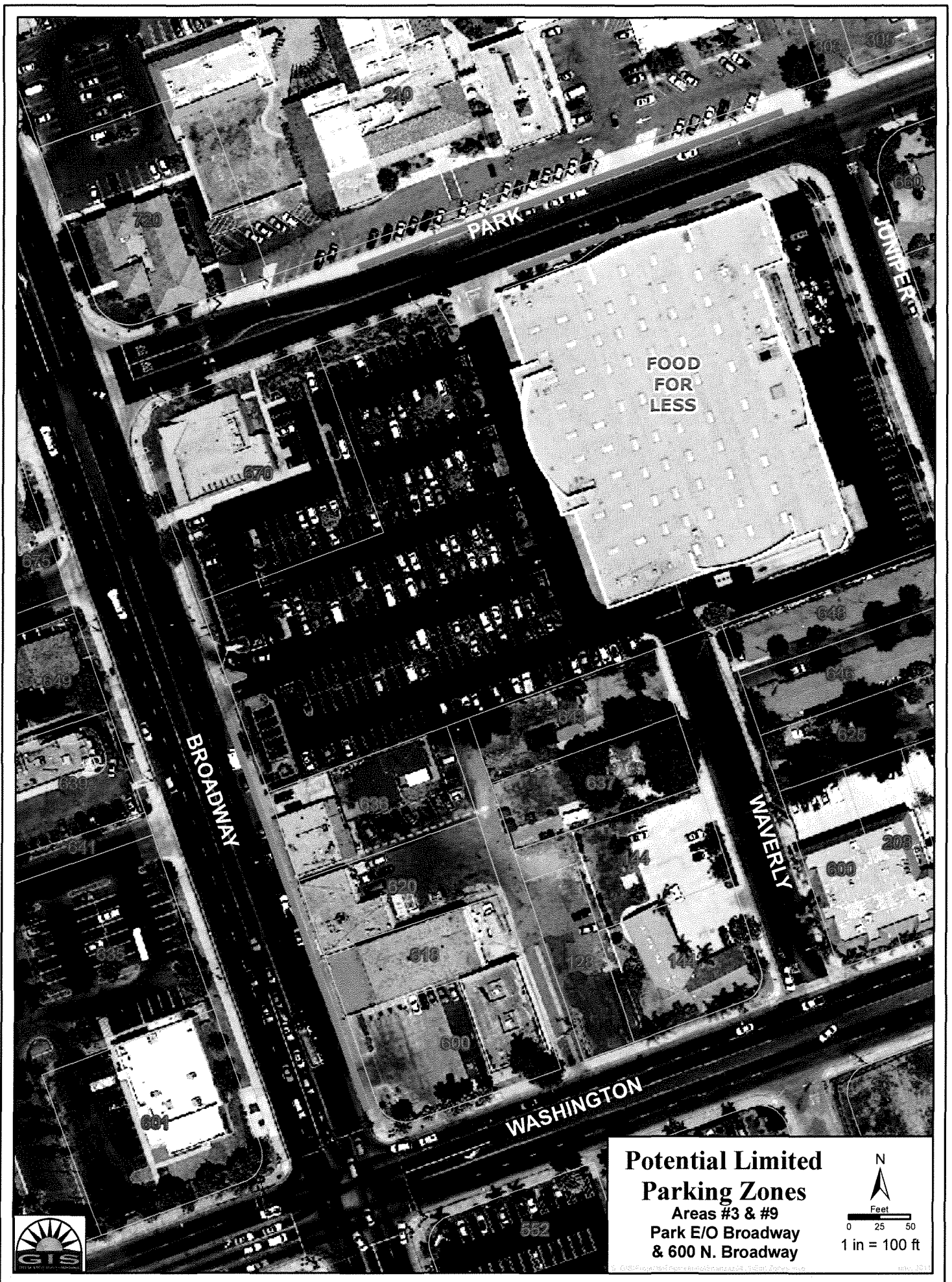
Edward N. Domingue, PE
Director of Engineering Services



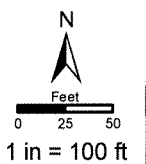
Ali M. Shahzad, PE
Associate Engineer







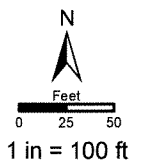
**Potential Limited
Parking Zones**
Areas #3 & #9
Park E/O Broadway
& 600 N. Broadway

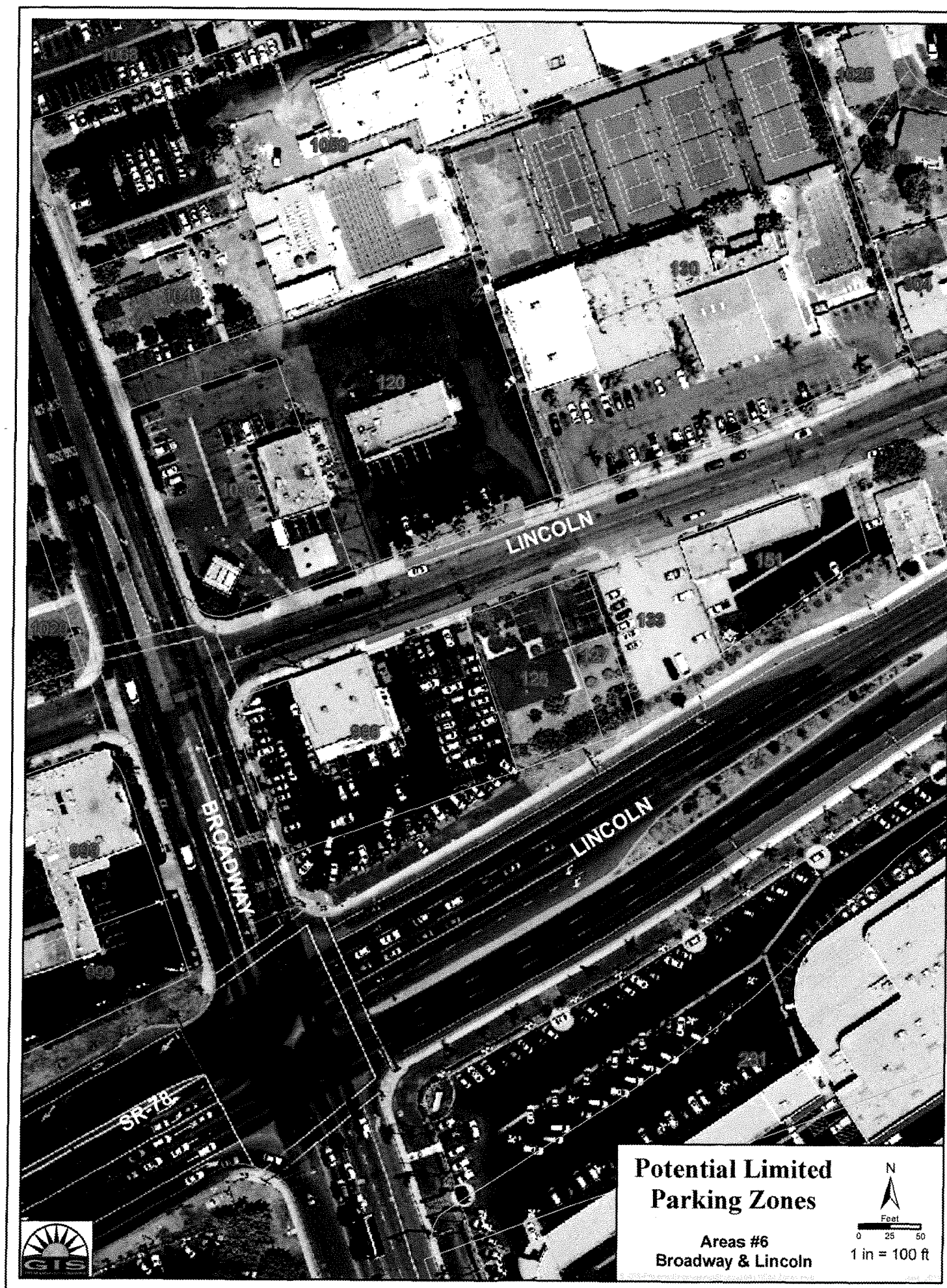




**Potential Limited
Parking Zones**

**Areas #4
Las Villas & El Norte**

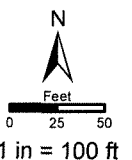






Potential Limited Parking Zones

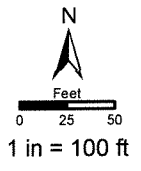
Areas #7
400 W. 9th

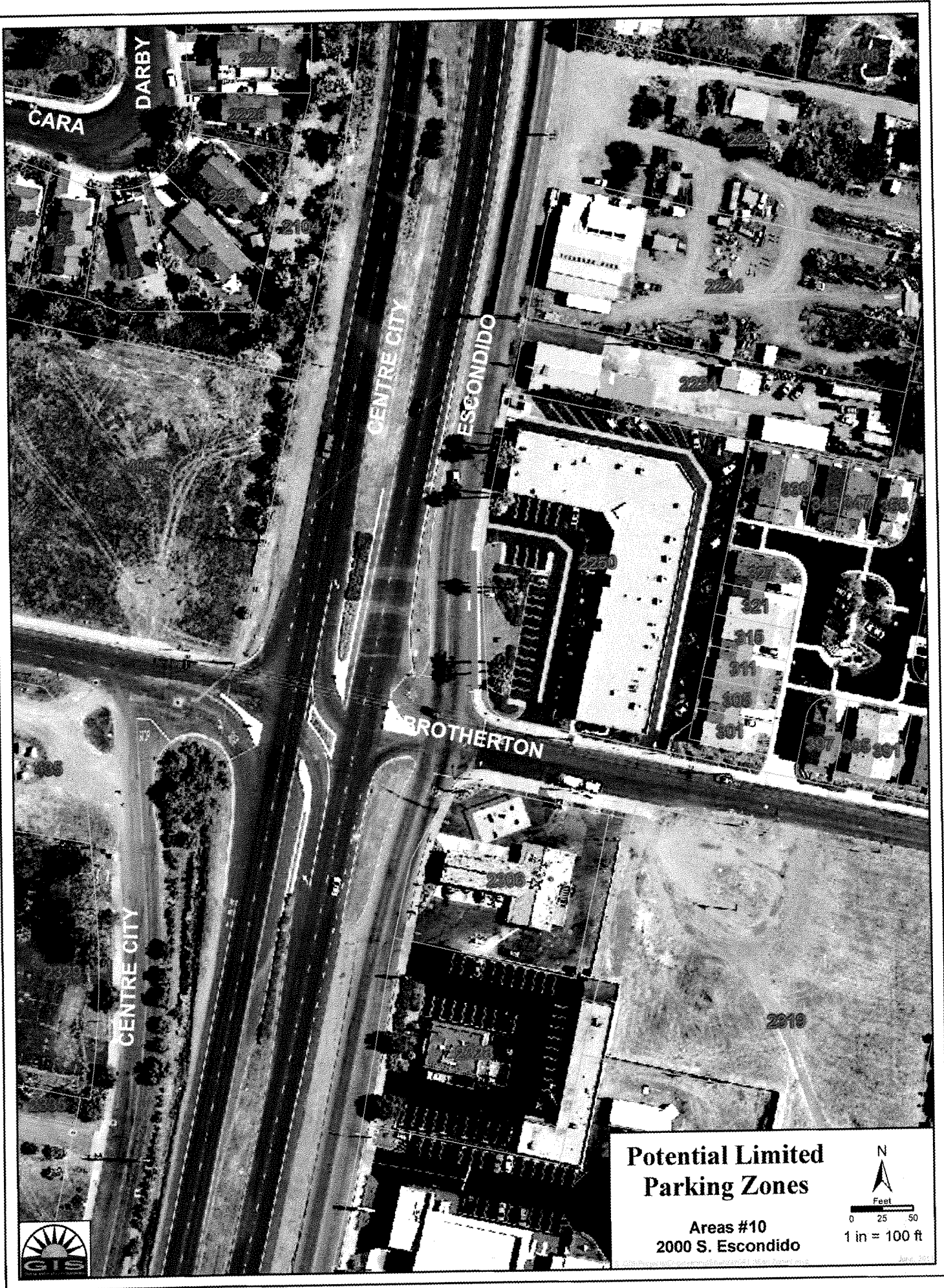




**Potential Limited
Parking Zones**

**Areas #8
2100 E. Valley**



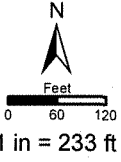


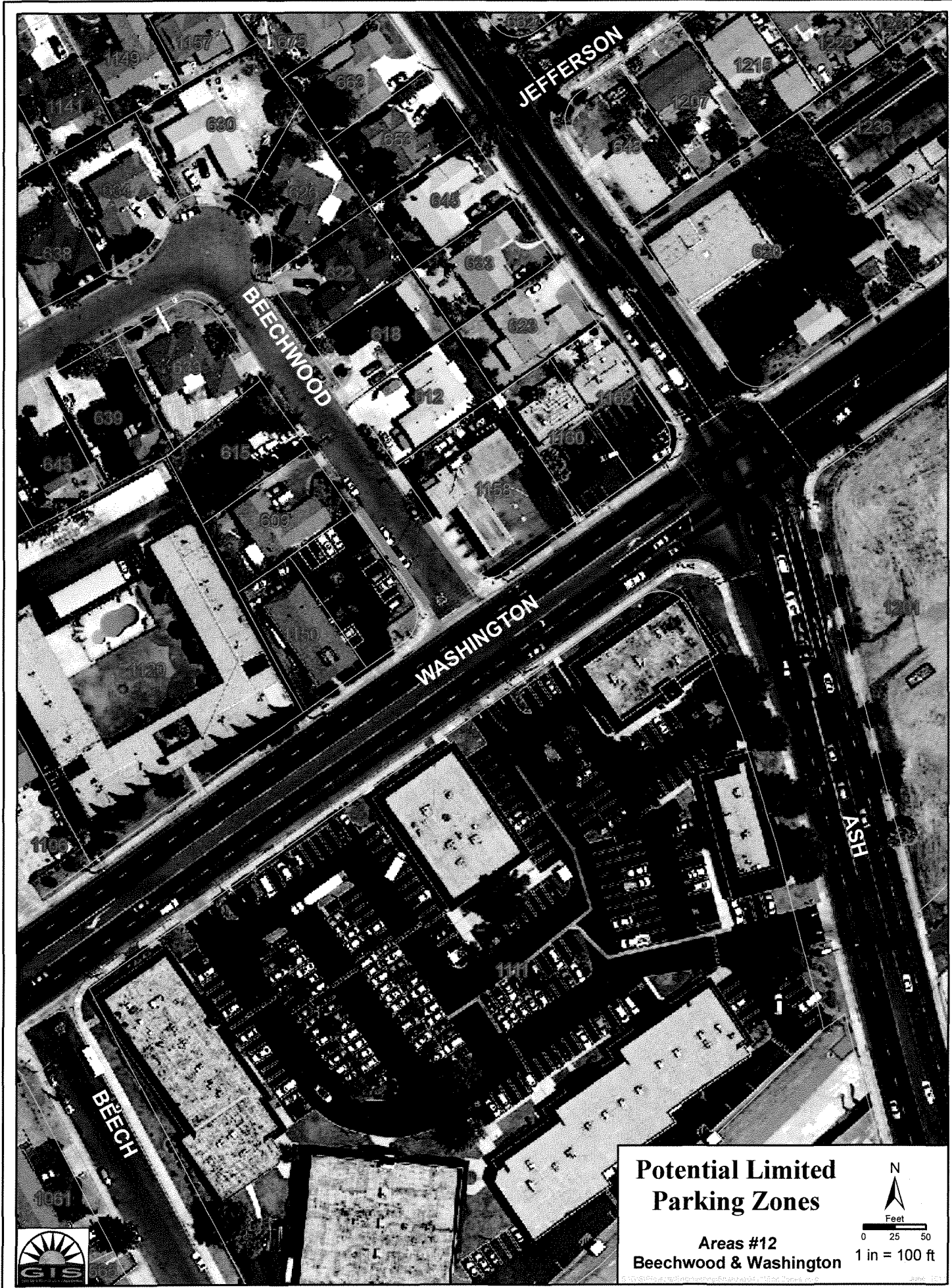


**Potential Limited
Parking Zones**

Areas #11

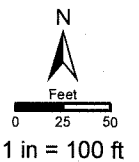
**Mission: Juniper to Fig
Fig: Mission to Lincoln**





Potential Limited Parking Zones

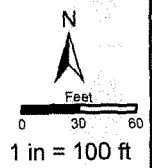
Areas #12
Beechwood & Washington





Potential Limited Parking Zones

Areas #14
Valley & Claudan

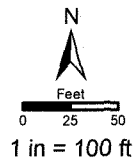


June 2014



Potential Limited Parking Zones

Area #15
Broadway S/O Crest



RESOLUTION NO. 2011-46

A RESOLUTION OF THE CITY COUNCIL OF
THE CITY OF ESCONDIDO, CALIFORNIA,
AMENDING THE TRAFFIC SCHEDULES FOR
TIME ZONE PARKING

WHEREAS, Section 28-5 (7) of the Escondido Municipal Code provides that the City Council shall establish a Traffic Schedule for on-street time parking zones; and

WHEREAS, this City Council Desires at this time and deems it to be in the best public interest to amend said Traffic Schedules;

NOW, THEREFORE, BE IT RESOLVED by the City Council of the City of Escondido, California, as follows:

1. That the above recitations are true.
2. That the Traffic Parking Schedules for On-Street Time Parking Zones be amended as follows:

Limited Time Zone two-hour and three-hour parking within the areas as needed on the following streets with minor field adjustments per field conditions.

1. Lincoln / Ash
2. Jesmond Dene / Broadway
3. Park / E of Broadway
3. Las Villas / El Norte
5. Lincoln / E of Rose (3-hour time zone)
6. Broadway / Lincoln Avenue
7. 400 W. 9th Avenue
8. 2100 E. Valley
9. 600 N. Broadway in front of Food for Less
10. 2200 S. Escondido
11. Mission from Juniper east to Fig
12. Beechwood / Washington
13. Rose Street between Grand Avenue and Valley Parkway
14. Valley Parkway and Claudan Road
15. Broadway south of Crest Street (west-side)