

## CITY COUNCIL

For City Clerk's Use:

☐ **APPROVED** ☐ **DENIED**

Reso No. \_\_\_\_\_ File No. \_\_\_\_\_

Ord No. \_\_\_\_\_

**Agenda Item No.: 6**

**Date: August 10, 2011**

**TO:** Honorable Mayor and Members of the City Council

**FROM:** Edward N. Domingue, Director of Engineering Services  
Gary J. McCarthy, Deputy City Attorney

**SUBJECT:** Timed Parking Restrictions

**RECOMMENDATION:**

Rescind Resolution 2011-46 and adopt Resolution 2011-111 to restrict parking seven days a week at the locations previously approved at the July 13, 2011, City Council hearing.

**FISCAL ANALYSIS:**

Funds are available in the CIP Streets Annual Maintenance budget for the \$12,000 estimated sign installation expenses.

**PREVIOUS ACTION:**

On March 17, 2011, the Transportation and Community Safety Commission (TCSC) recommended approval to implement two-hour and three-hour parking time zones at specific locations. On July 13, 2011, the City Council discussed and approved parking restrictions at fourteen locations throughout the city. Although the council addressed specific locations, durations and days of the week for the parking restrictions, Resolution 2011-46 did not.

**BACKGROUND:**

Escondido Municipal Code section 28-143 authorizes the City Traffic Engineer, with the approval of the City Council, to install signs and markings where necessary to restrict parking for a certain period of time. City officials regularly have received complaints of parking spaces being occupied for long periods by vehicles with "for sale" signs on them.

The Escondido Police Department Traffic Bureau identified fifteen areas most commonly used for long term parking of vehicles with "For Sale" signs. The City Traffic Engineer evaluated each area and found it appropriate to restrict parking in fourteen areas. Maps of the specific locations are attached to his report as Exhibits 1 through 13 and Exhibit 15. Area 14 has been removed from this

Timed Parking Restrictions

August 10, 2011

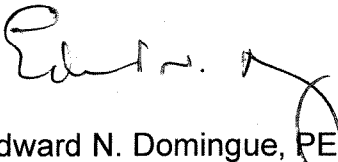
Page 2

resolution as the City Traffic Engineer will resolve the parking issues at W. Valley Parkway and Claudan Road by modifying an existing bicycle lane.

On March 17, 2011, the TCSC recommended approval to implement two-hour and three-hour parking time zones at various locations citywide. During discussion at the TCSC, an elementary school district representative requested the curb adjacent to Rose Elementary school be designated for three-hour restricted parking to allow parking during frequent school events that regularly exceed two hours in duration. The resolution will restrict the remaining areas to a two hour limit. All restrictions will be effective twenty-four hours per day and seven days a week.

On July 13, 2011, the Council heard public comments and approved the time limits included in this resolution. But Resolution 2011-46 did not include the specific details addressed by the Council during the public deliberation. For clarity, Resolution 2011-111 will rescind the previous resolution and document the decisions made by the Council on July 13th. The proposed parking restrictions are necessary to ensure equal access to public parking spaces and will have a positive impact on those businesses/residences adjacent to the timed parking zones. The limited time parking will take effect as soon as the signs are posted.

Respectfully submitted,

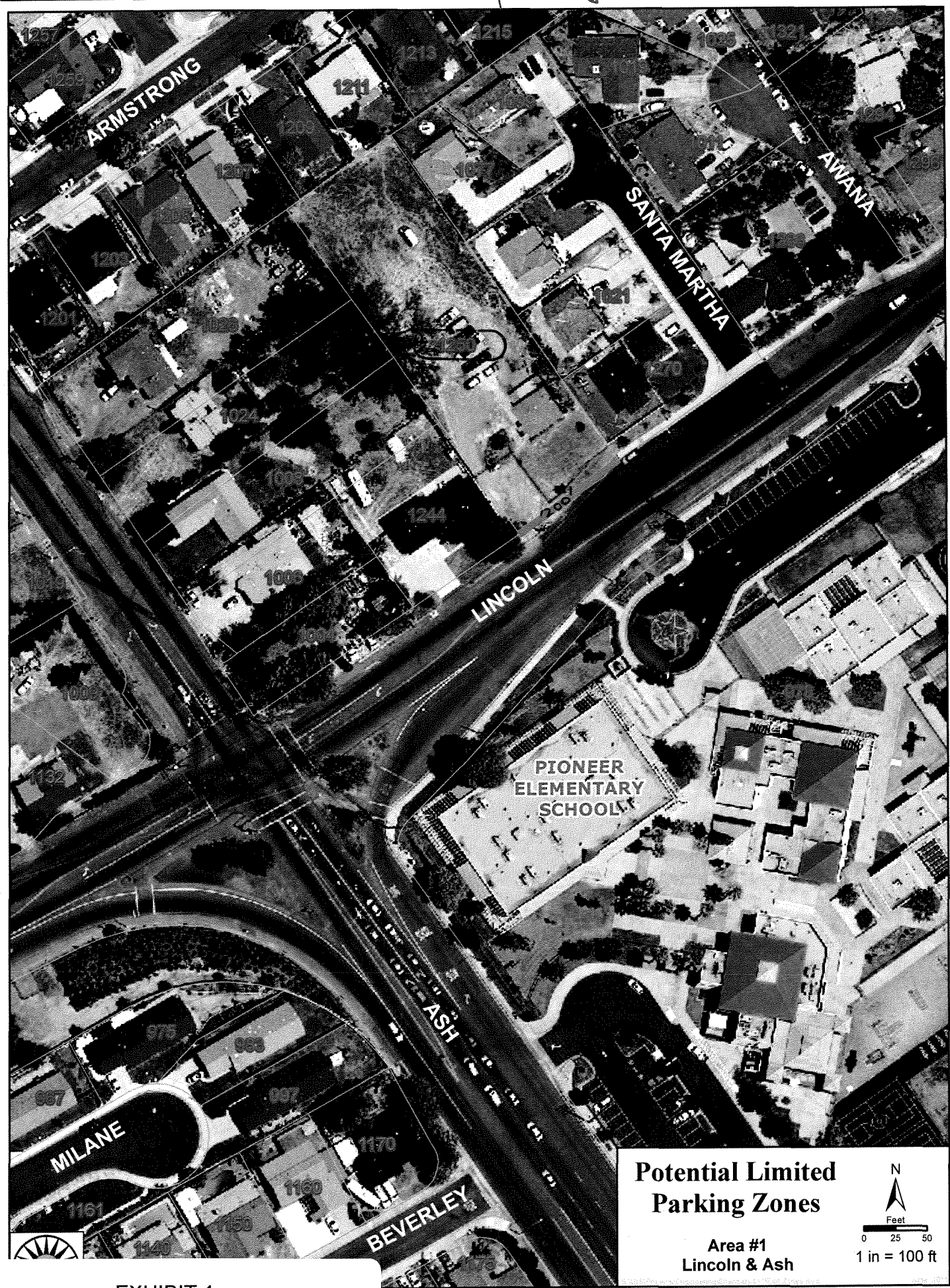


Edward N. Domingue, PE  
Director of Engineering Services



Gary J. McCarthy  
Deputy City Attorney

#1 → 200' fronting 1250 Block. (NORTH SIDE)



**Potential Limited  
Parking Zones**

Area #1  
Lincoln & Ash

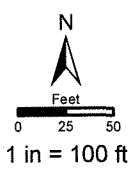


EXHIBIT 1

#2 → 550' fronting 2401 Block (SOUTH SIDE)



EXHIBIT 2

#3. Park E. of Broadway < 100' NORTH CURB.  
410' SOUTH CURB.

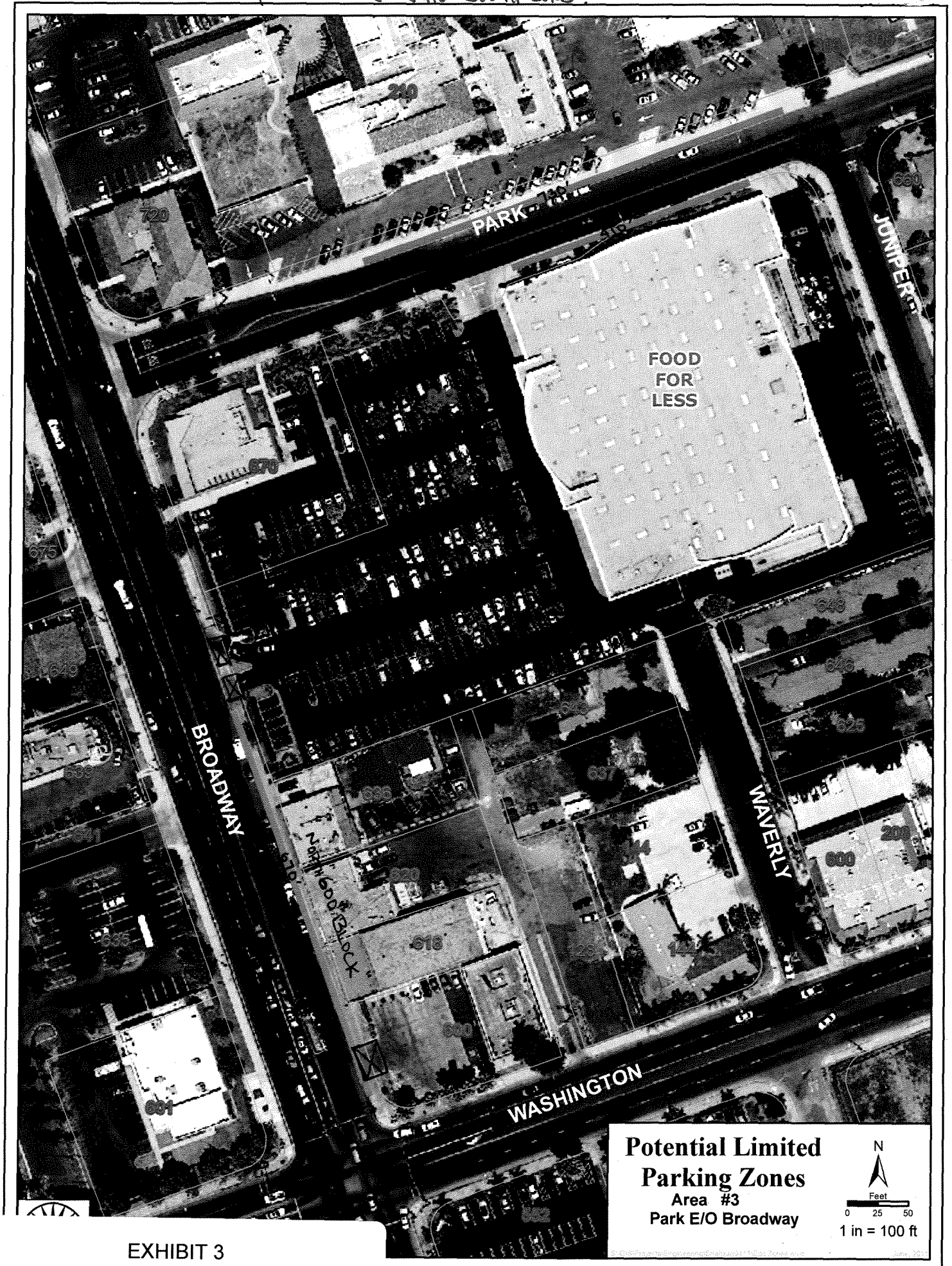


EXHIBIT 3

driveway.

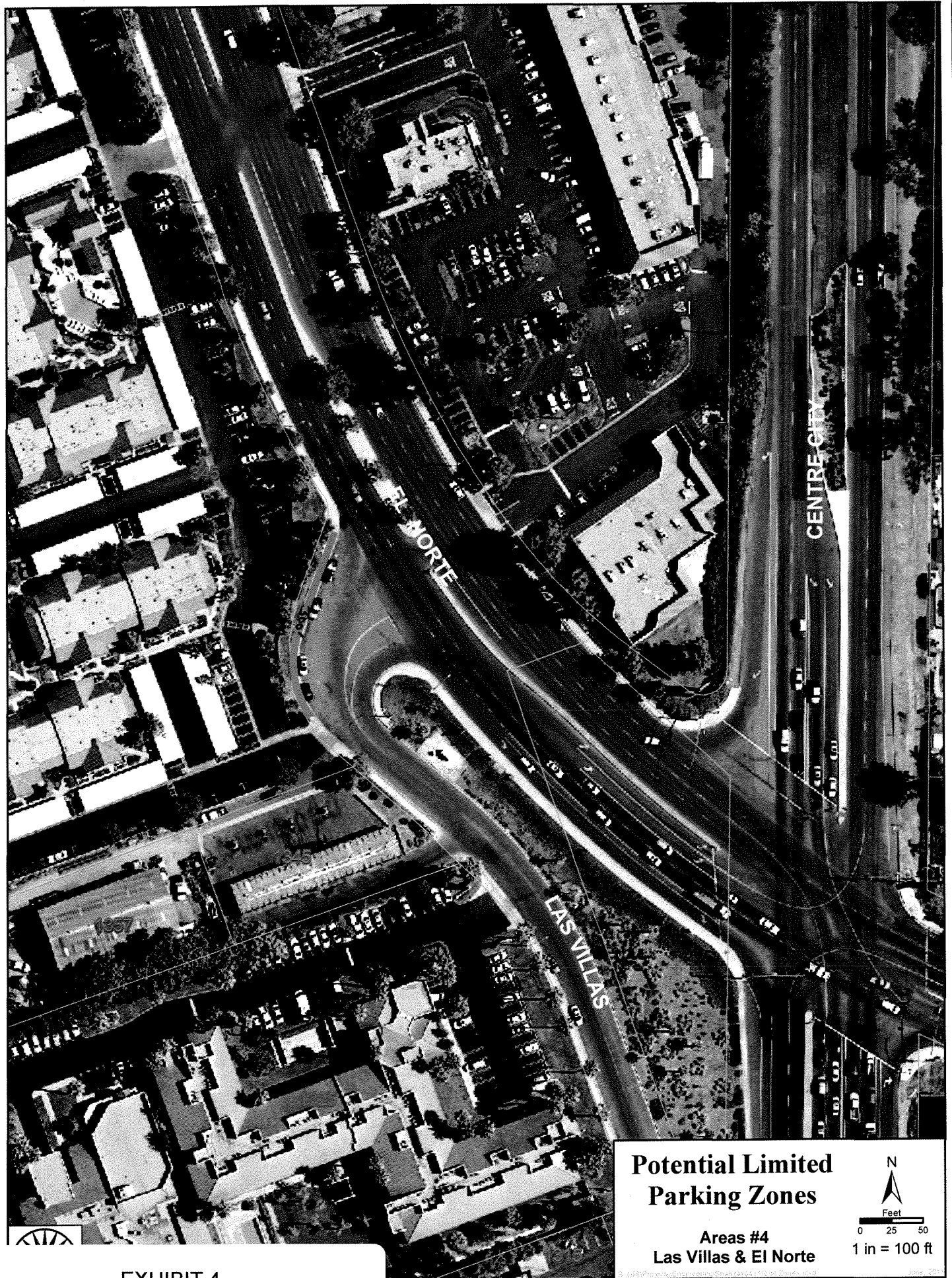


EXHIBIT 4

1330' 1600' BLOCK  
#5. LINCOLN / E. OF ROSE SOUTH CURB.



EXHIBIT 5

#6 100 BLOCK LINCOLN E. OF BROADWAY < N.S. 200' S.S. 540'

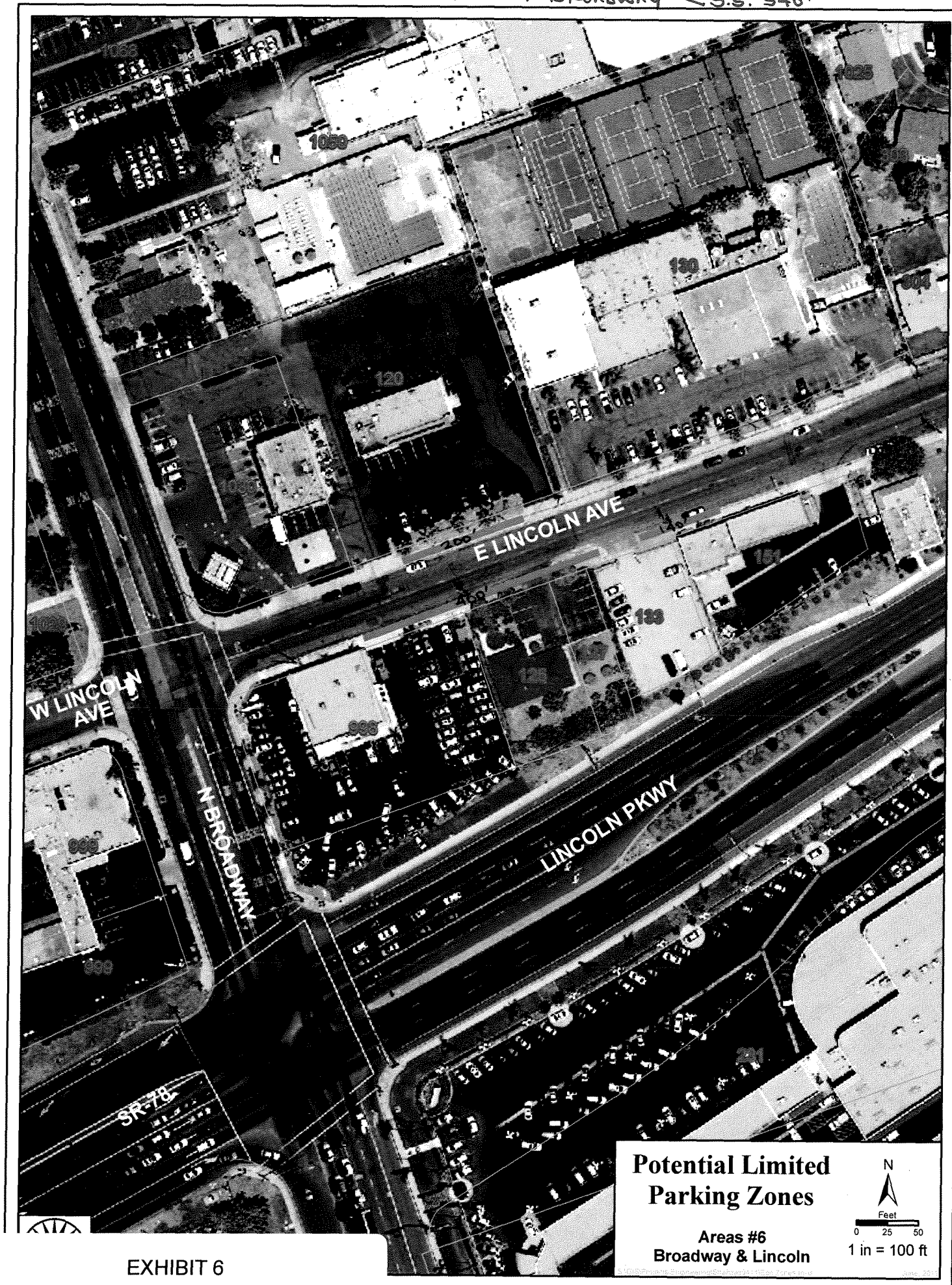


EXHIBIT 6

#7 - 170' 400 BLOCK W. 9TH AVE. EAST OF CCP.



EXHIBIT 7

# 8. 600' SOUTH CURB. 2100 E. VALLEY PKWY.



EXHIBIT 8

#9. 670' N. 600 BLOCK ON BROADWAY

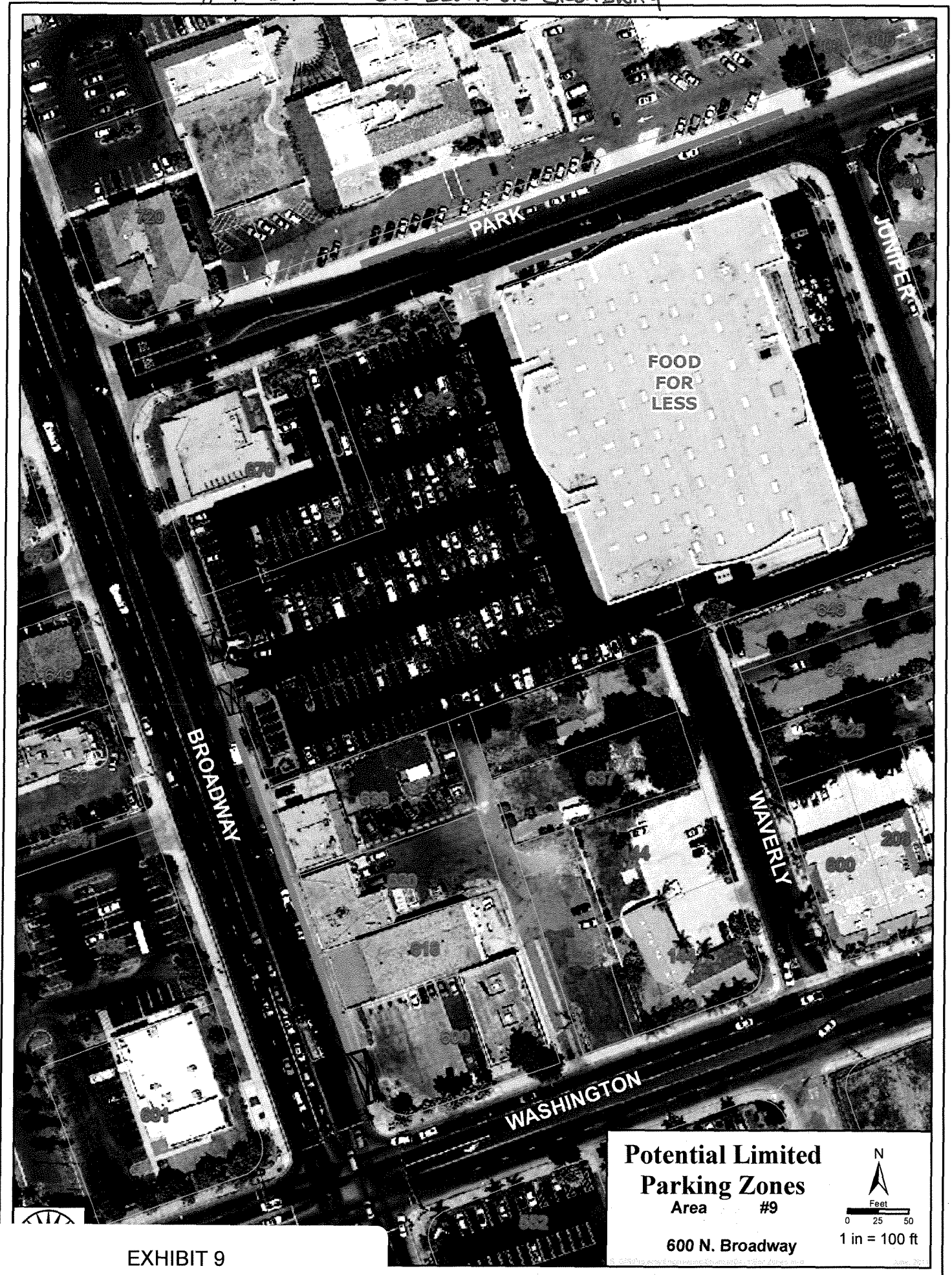


EXHIBIT 9

driveway

#10. 2200 S. ESCONDIDO BLVD.  
2200 S. ESCONDIDO BLVD

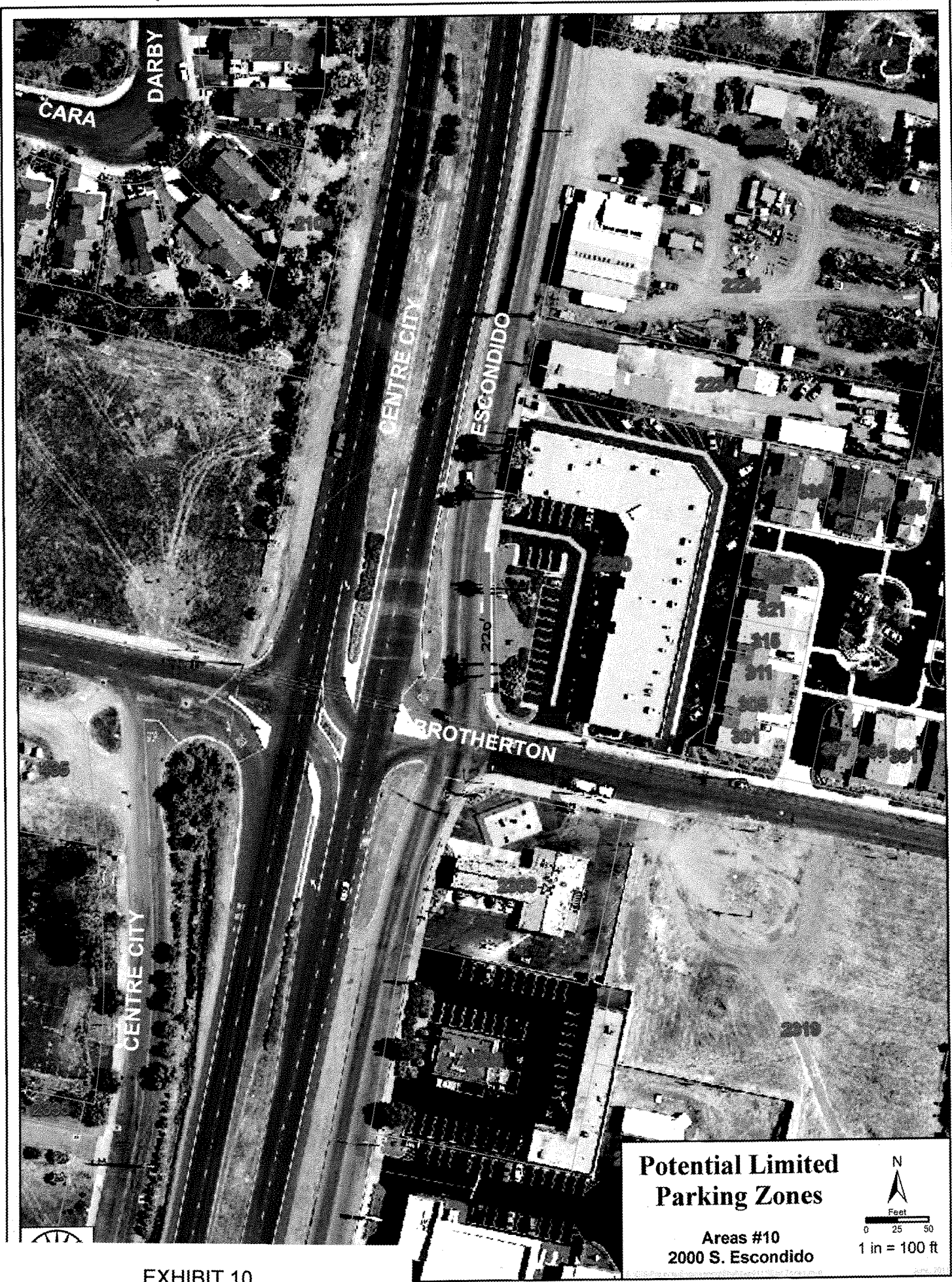


EXHIBIT 10

# 11. 700 & 800 BIK. N. Fig Both Curb Lined.



EXHIBIT 11

#12 - BEECHWOOD / WASHINGTON - 185' WEST CURB + 110' EAST CURB

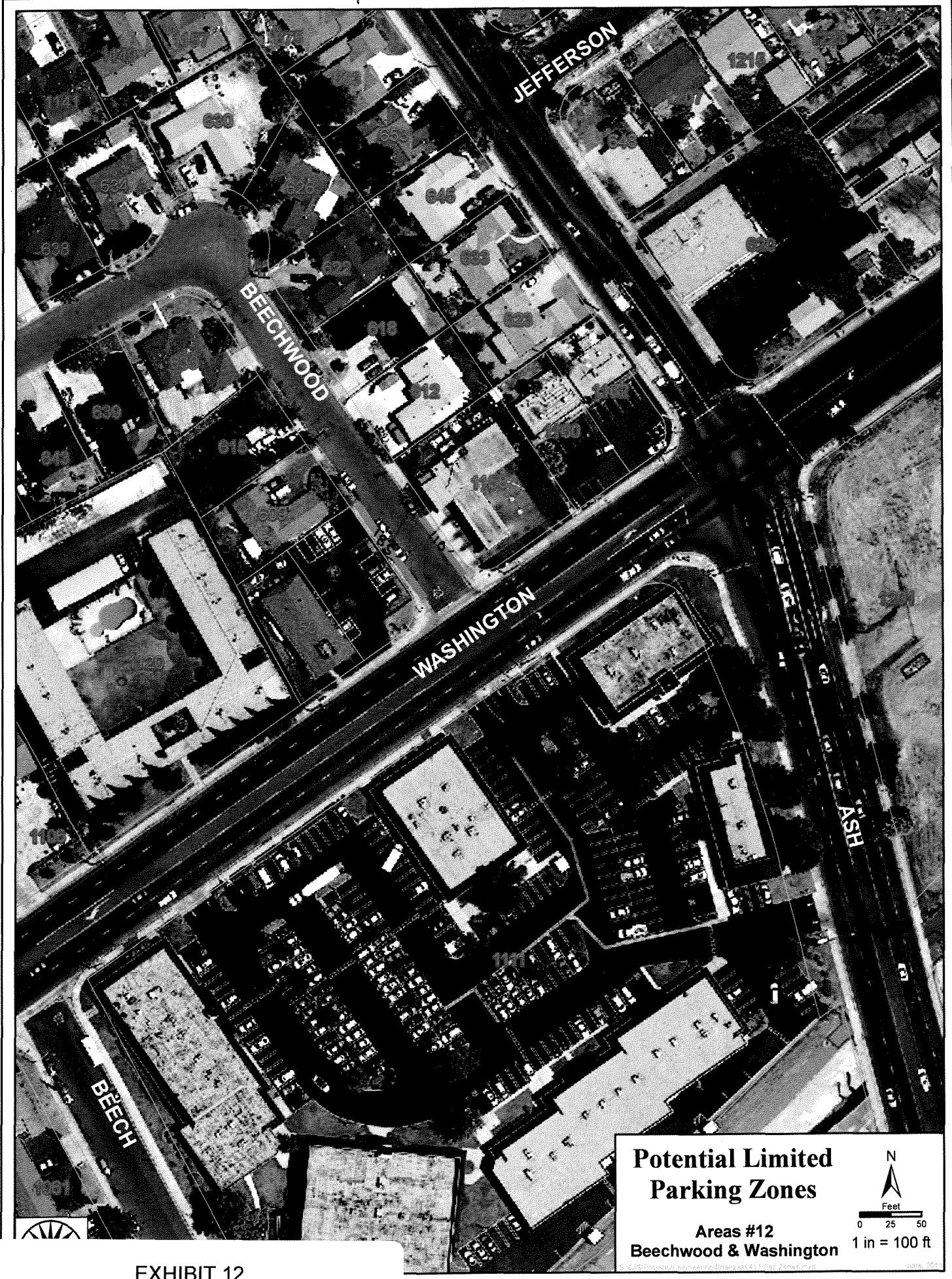


EXHIBIT 12

# 13 . 1500 BLOCK ROSE ST. - 710' WEST CURB

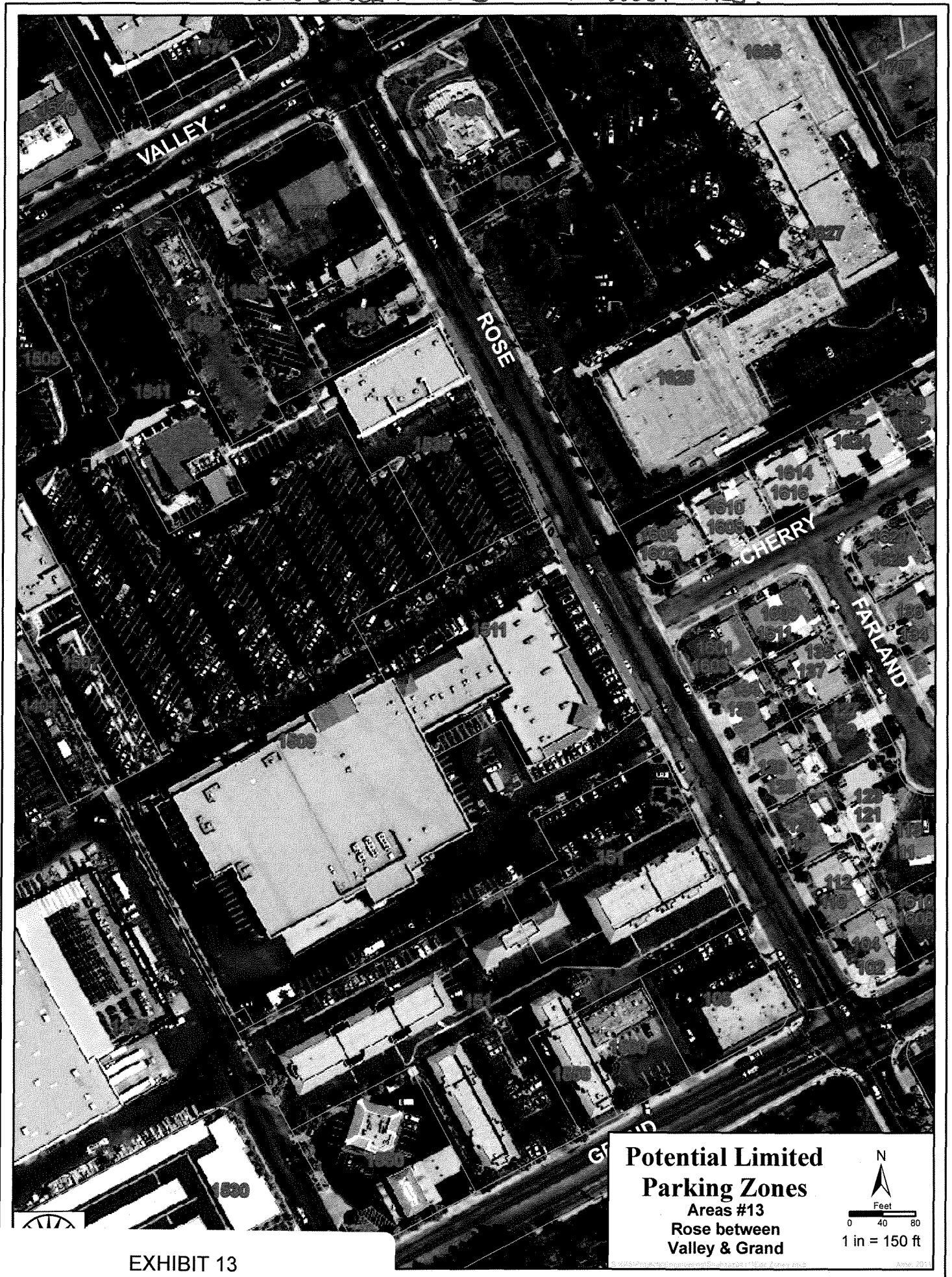


EXHIBIT 13

#15 800 BLOCK N. BROADWAY - 230' WEST CURB.



EXHIBIT 15

RESOLUTION NO. 2011-111

A RESOLUTION OF THE CITY COUNCIL OF  
THE CITY OF ESCONDIDO, CALIFORNIA,  
AMENDING THE TRAFFIC SCHEDULES FOR  
TIME ZONE PARKING PURSUANT TO  
ESCONDIDO MUNICIPAL CODE SECTION  
28-146

WHEREAS, Escondido Municipal Code Section 28-5 authorizes the City Council to establish and amend the following traffic schedule for time parking zones; and

WHEREAS, Escondido Municipal Code Section 28-146 authorizes the City Traffic Engineer with the approval of the Council Council to install and maintain signs and markings upon any street where it is deemed necessary to restrict parking to a certain period of time; and

WHEREAS the Chief of Police of the Escondido Police Department identified fifteen locations throughout the city where private parties consumed all available parking for prolonged periods of time thus precluding short term parking by the general public; and

WHEREAS, the City Traffic Engineer studied each location and developed the timed parking restrictions for fourteen specific locations contained in Exhibit "A," and incorporated by this reference; and

WHEREAS, the City Traffic and Community Safety Commission reviewed the recommendations and voted to approve them; and

WHEREAS, on July 13, 2011, the City Council received several responses as a result of a community outreach effort, heard public comments, discussed options for

parking restrictions, and then passed Resolution 2011-46 authorizing parking restrictions at the fourteen recommended locations; and

WHEREAS, Resolution 2011-46 did not document the specific restrictions discussed by the City Council during the public hearing; and

WHEREAS, the City Council desires at this time and deems it to be in the best public interest to adopt changes to the existing traffic schedules for time zone parking as presented in the attached Exhibit "A."

NOW, THEREFORE, BE IT RESOLVED by the City Council of the City of Escondido, California, as follows:

1. That the above recitations are true.
2. That the City Council rescinds Resolution 2011-46.
3. That the City Council approves modifications to the Traffic Schedule for Timed Parking as provided in Exhibit "A" and authorizes the City Traffic Engineer to install signs and markings as appropriate to implement the parking restrictions.

### Time Parking Zones

Parking Restrictions shall be effective 24 hours per day and 7 days per week.

Exhibit No.	Street	Specific Location	Time Limit
1	E. Lincoln Ave.	Approximately 200 ft. on north curb in front of unimproved lot at 1250 E. Lincoln Ave.; cross street: Ash St.	2 hour zone
2	Jesmond Dene Rd.	Approximately 550 ft. fronting 2400 block on south curb; cross street: N. Broadway	2 hour zone
3	E. Park Ave.	Approximately 730 ft. on north curb at 200 block and 410 ft. on south curb fronting Food For Less; cross street: N. Broadway	2 hour zone
4	Las Villas Way	Approximately 300 ft. on west curb at 1300 block; cross street: El Norte Pkwy	2 hour zone
5	E. Lincoln Ave.	Approximately 1300 ft. on south curb adjacent to Rose Elementary School and the church at 1717 E Lincoln Ave.; cross street: Via Lomita	3 hour zone
6	E. Lincoln Ave.	Approximately 200 ft. on north curb and two segments of 400 ft. and 140 ft. on south curb at 100 block; cross street: N. Broadway	2 hour zone
7	9 <sup>th</sup> Ave.	Approximately 170 ft. on south curb at 400 block; cross street: Center City Pkwy	2 hour zone
8	E. Valley Pkwy.	Approximately 600 ft. in three segments (290, 190, and 120 ft.) on south curb of 2100 block; cross street: Quarry Glen	2 hour zone
9	N. Broadway	Approximately 670 ft. on east curb at 600 block; cross street: E. Washington Ave.	2 hour zone
10	S. Escondido Blvd.	Approximately 220 feet. on east curb in front of strip mall at 2250 S. Escondido Blvd.; cross street: Brotherton Rd.	2 hour zone
11	N. Fig St.	Approximately 620 ft. in three segments (255, 190, and 175 ft.) on both east and west curbs at 600 and 700 blocks; cross street: E. Mission Ave.	2 hour zone
12	Beechwood St.	Approximately 185 ft. on west curb at 1150 Beechwood St. and 110 on east curb at 1158 Beechwood St.; cross street: E. Washington	2 hour zone
13	Rose St.	Approximately 710 ft. on west curb of 1500 block; cross street: Cherry Place	2 hour zone
15	N. Broadway	Approximately 230 ft. on west curb in front of 855 N. Broadway; cross street: Crest St.	2 hour zone